



MONTHLY MEMBERSHIP PROGRESS REPORT

District 3234D1

Results as of: 09/30/2017

GMT: JAYESH THAKKAR

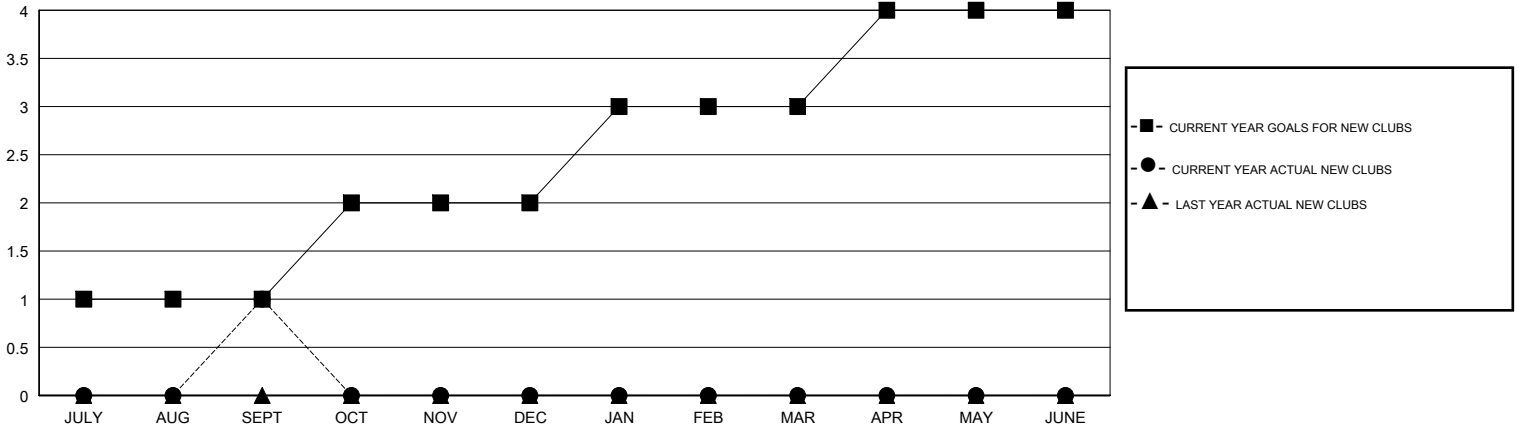
LOCATION INDIA

GMT CA

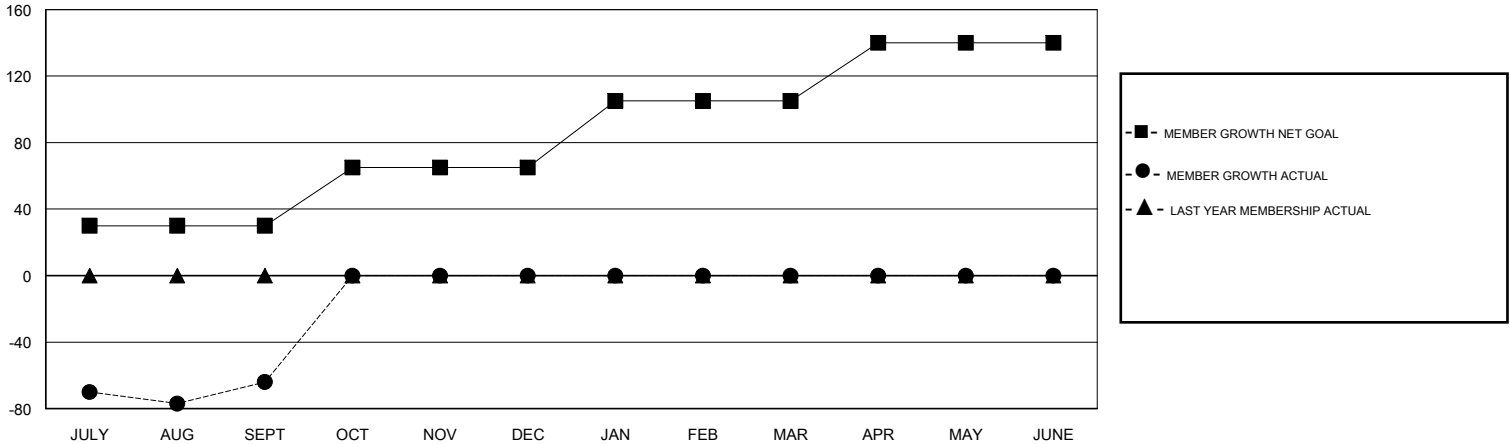
Clubs			
RESULTS FOR 2017-2018			
QUARTER	NEW CLUB GOAL	NEW CLUBS	DROPPED CLUBS
JULY/AUG/SEPT	1	1	0
OCT/NOV/DEC	1	0	0
JAN/FEB/MAR	1	0	0
APR/MAY/JUNE	1	0	0

Members			
RESULTS FOR 2017-2018			
QUARTER	MEMBER GROWTH NET GOAL	MEMBER GROWTH ACTUAL	DROPPED MEMBERS ACTUAL (including transfers)
JULY/AUG/SEPT	30	43	107
OCT/NOV/DEC	35	0	0
JAN/FEB/MAR	40	0	0
APR/MAY/JUNE	35	0	0

GOALS AND ACTUAL NEW CLUBS CUMULATIVE



GOALS AND ACTUAL MEMBERS CUMULATIVE



DROPPED CLUBS: 0

11 CLUBS OF 61 ADDED 1 OR MORE NEW MEMBERS

GENDER DISTRIBUTION	
MALE	1,751 (78.24%)
FEMALE	487 (21.76%)
Women Percentage Fiscal Year Goal: 15%	

DROPPED MEMBERS	
DECEASED	2
CLUB CANCELLED	0
OTHER	105
TOTAL	107

[CLICK HERE FOR CUMULATIVE MEMBERSHIP DATA](#)

TOTAL FAMILY UNIT MEMBERS	781
FAMILY MEMBERS PAYING HALF DUES	396